

Minimise Expensive Food & Beverage Recalls with SKF's Foodline Range

Industry Sector:
Food & Beverage



Application:
Canning Lines



Problem

In the food and beverage industry, hygiene isn't just a priority — it's a necessity. Contamination risks, strict regulatory standards, and constant washdowns make it a uniquely tough environment for mechanical components, especially bearings.

One well-known food manufacturer found themselves replacing bearing units on their canning conveyors far more frequently than expected. Despite rigorous maintenance routines, harsh washdowns and caustic cleaning chemicals were compromising the lifespan and performance of their existing units. Frequent bearing failures were leading to increased downtime, rising costs, and a growing risk to product safety.

With food safety under more scrutiny than ever — and product recalls on the rise — it was time for a more robust solution.

Solution

That's where ERIKS and SKF stepped in. After conducting a site-wide survey, our specialists identified the perfect replacement: the SKF Foodline Blue Range ball bearing units — engineered specifically for hygienic environments.

Trialled successfully on the canning line, these units feature corrosion-resistant inserts with AISI 420 stainless steel components, sealed to withstand high-pressure washdowns and aggressive disinfectants. Their unique geometry is designed to reduce residue build-up and promote easy cleaning — crucial in food environments.

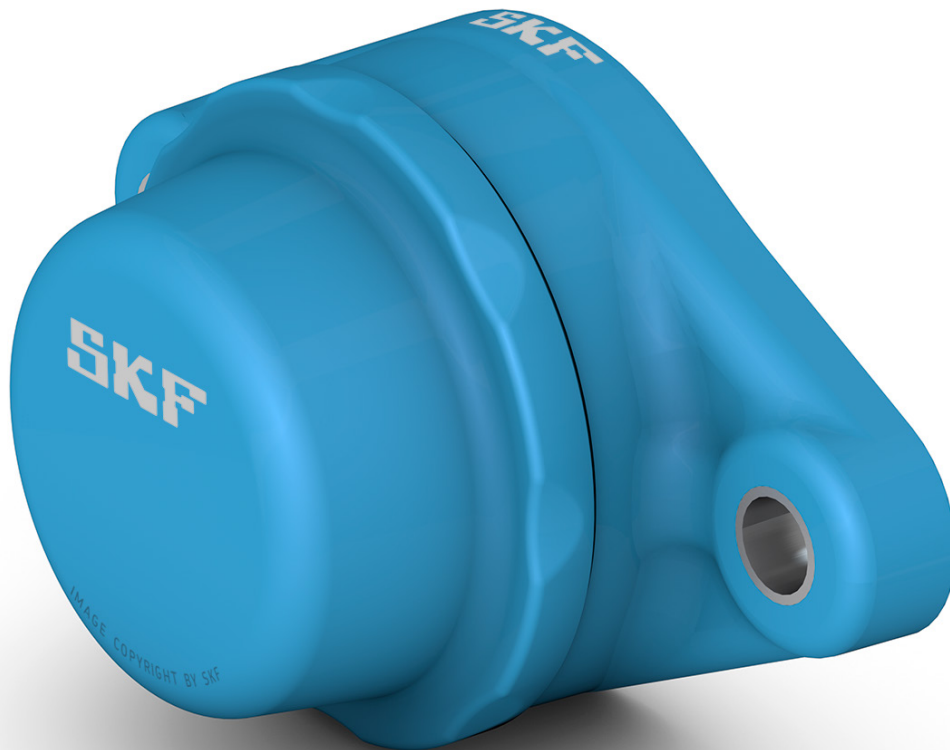
[Continued...]

Minimise Expensive Food & Beverage Recalls with SKF's Foodline Range

Industry Sector:
Food & Beverage



Application:
Canning Lines



To further increase protection and operator safety, each unit is fitted with a back seal and end cover, shielding it from contamination. Most notably, the blue colouring ensures any fragments are easy to detect — ticking all the boxes for visual food safety compliance.

- **Advanced sealing** - High-efficiency RSH food grade seals help keep contaminants out, and food-safe grease in. Even if grease escapes, it's NSF H1 registered, allergen-free, and suitable for incidental food contact.
- **Optical detection** - FDA and EC-approved nitrile rubber seals are coloured bright blue for fast identification in case of contamination.
- **SKF Explorer performance** - Made from ultra-clean, high-grade steel, Explorer bearings offer longer life, better durability and lower maintenance demands.
- **Lubricated for life** - With SKF's Solid Oil options available, these units are perfect for high-moisture environments where relubrication is impractical or impossible.

Following the trial's success, the customer ordered 400 SKF Foodline units as part of a broader facility upgrade — a major step in enhancing both uptime and compliance.

Thanks to ERIKS' engineering support and SKF's purpose-built bearing technologies, the customer significantly reduced downtime, improved hygiene compliance, and boosted operational efficiency — all while protecting product integrity.