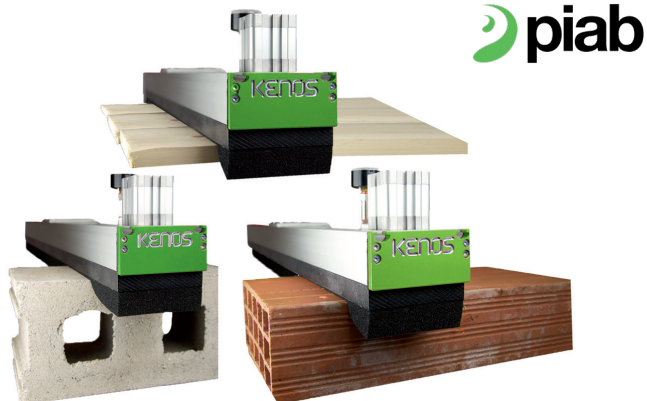


# Lift heavy products with rough surfaces in dusty work environments

There are many awkward lifting applications in various industries which not only present health and safety issues but are also time consuming and costly to resolve. But now ERIKS can provide you with an all in one solution.

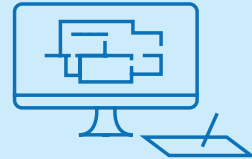


Industry Sector:

**GENERAL ENGINEERING**

Application:

**WOOD, TIMBER, CONCRETE  
BLOCKS & BRICKS**



**Heavy, dusty products with rough surfaces are notoriously difficult to lift and move safely.**

Avoid repetitive manual handling & potential injuries with Piab's Kenos KHVG grippers.

### Problem:

Multifaceted, and with a diverse range of products, the building industry is a particularly demanding customer.

Added to this, the process of producing these products usually results in dusty work places making the job of lifting heavy products with rough surfaces quickly, efficiently and safely always difficult, not to mention the down time, and associated costs, required to specify, design and manufacture a suitable solution.

Any vacuum handling system operating in such environments must be rugged and easy to maintain.

### Solution:

The heavy duty **Kenos KHVG grippers** from Piab are able to withstand the often challenging environments in which this end of the industry operates.

They are suitable for handling complete layers of sawn timber, heavy planking, raw wood and materials for building, such as concrete blocks, bricks etc and come with shutter check valve technology designed specifically for dusty work environments. Fitted with an extra thick layer of foam, the heavy duty gripper is especially adept at handling uneven, surfaces.

Because of the ability to tailor not just the thickness but also the foam padding's other dimensions to suit customer specifications, grippers can be perfected for any shape, size or weight.

Available in 10 standard sizes with three thicknesses of foam ensures there is a Kenos gripper suitable for your lifting requirements.

Bespoke gripper sizes are also available.

They are also suitable for handling very long workpieces.