

Eliminate waste — maintain and lubricate with greater precision

There are countless routine jobs in a number of professions that can quickly become awkward, time-consuming, frustrating and messy, costing you precious time, resource and money. But now ERIKS can provide you with an all-in-one solution.

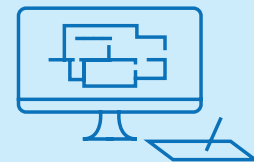


Industry Sector:

GENERAL ENGINEERING

Application:

**WATER DISPLACEMENT,
PROTECTION AND LUBRICATION**



WD-40's NEW Flexible Straw System is longer, tougher and more accurate than ever before.

ideal for precision work in a wide variety of sectors.

Problem solvers

Problem:

Difficult-to-reach spots and tight spaces can be a common dilemma in the maintenance and repair industry.

Solution:

WD-40, long-time pioneers in tackling this issue, have evolved their handy Smart Straw application system even further to provide users with the **Flexible Straw System**, a classic WD-40 Multi-Use Product with an ingenious innovation.

The Flexible applicator is a hard-wearing, heat-resistant, bendable straw which keeps its shape. Flexible is ideal for precision work in a wide variety of sectors: mechanics, car, truck and motorbike maintenance, hydraulics, agriculture, and manufacturing.

WD-40 Flexible's Multi-Use formula is as powerful as ever, and remains a reliable all-round essential.

The Flexible Straw System allows greater precision which means you can target the areas that need treating directly, eliminating waste.

The Sprays2Ways technology is still a feature too.

This new product will surely aid both professional and non-professional users in a more efficient and reliable way than ever before.