

FESTO

Core product range

Simply part of the solution

ERIKS

Introduction



**QUICK
DELIVERY**



**IN STOCK
WORLDWIDE**



**OPTIMISED
FUNCTIONALITY**

Simply the best selection

Working alongside Festo we have selected a range of high quality, readily available products designed to meet the needs of the most common applications.

- ★ **Over 35,000 products can be ordered at any time**
- ★ **Express dispatch, quotation and order management at all times**
- ★ **Optimised functionality**

Simply part of the solution

How can we make your work easier and more productive?

By helping you, our customers, ensure your production process is running efficiently and reliably for now and for the future in both process and industrial automation.

Working alongside Festo you can rest assured that your production KPIs are at the heart of everything we do.

Let us be part of your solution with the Festo core product range.

Contents

CYLINDERS

DSNU Round Cylinder	5
DSBC Standard Cylinder	8
DSBG Standard Cylinder Tie Rod	11
ADN Compact Cylinder	13
Cylinder Accessories	18
Cylinder Switches	22
DFM Guided Drives	23
DRRD Semi-Rotary Drive with Piston	26
DRVS Semi-Rotary Vane Drive	27

VALVES

VUVS Universal Directional Control Valves	30
Blanking Plates	31
Manifolds	32
Coils	34
Plug	34

AIR PREPARATION

Combination Units	37
Regulators	37
Filter Regulators	37
Shut-Off Valves	38
Mounting Accessories	38

FLOW REGULATORS

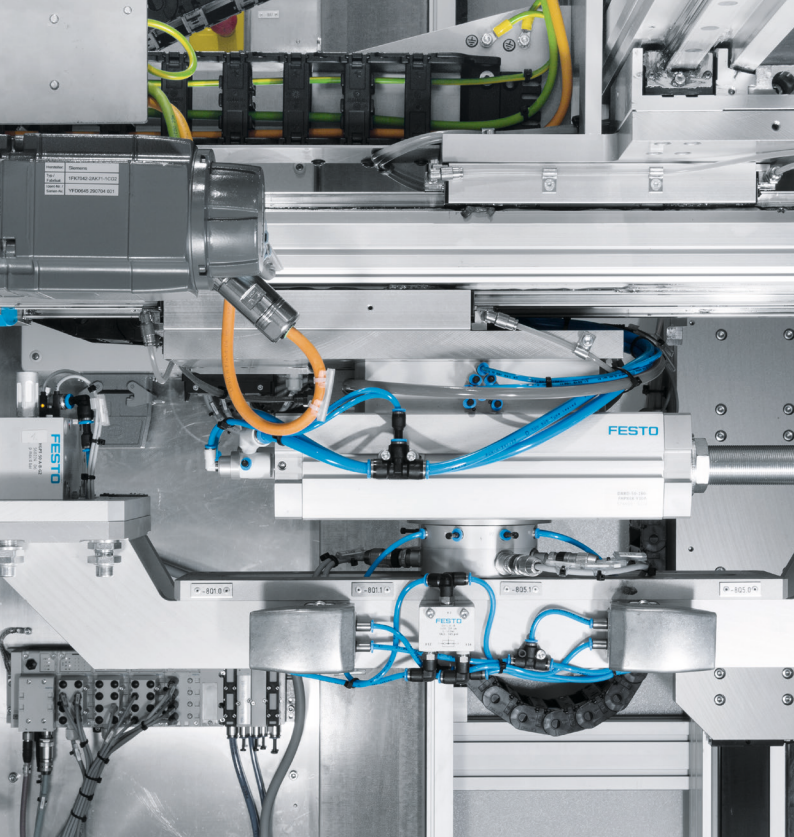
Flow Regulators	40
-----------------	----

SILENCERS

Silencers	41
-----------	----

INSTRUMENTATION

Flow Sensors	42
Pressure Sensors	43



FESTO Cylinders

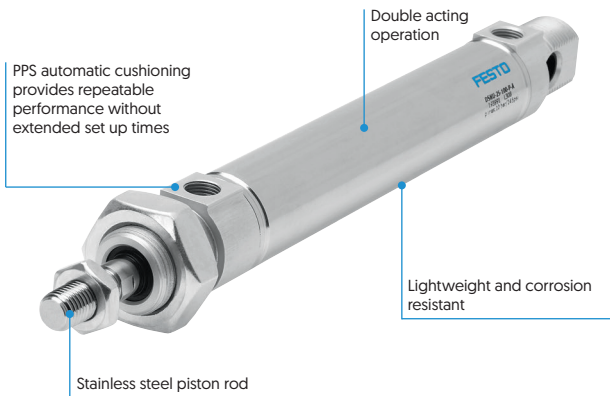
The following pages contain just a selection of the full range, for more information contact your local ERIKS Service Centre.

ERIKS

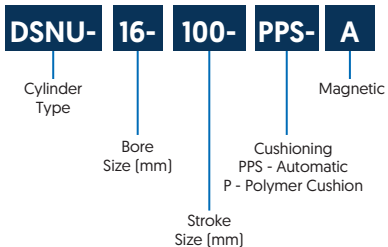


DSNU Round Cylinder

Features



Part Numbering



DSNU Round Cylinder Sizes



STROKE (mm)	BORE (mm)		
	8	10	12
10	DSNU-8-10-P-A	DSNU-10-10-P-A	DSNU-12-10-P-A
15	DSNU-8-15-P-A	DSNU-10-15-P-A	DSNU-12-15-P-A
20	DSNU-8-20-P-A	DSNU-10-20-P-A	DSNU-12-20-P-A
25	DSNU-8-25-P-A	DSNU-10-25-P-A	DSNU-12-25-P-A
30	DSNU-8-30-P-A	DSNU-10-30-P-A	DSNU-12-30-P-A
40	DSNU-8-40-P-A	DSNU-10-40-P-A	DSNU-12-40-P-A
50	DSNU-8-50-P-A	DSNU-10-50-P-A	DSNU-12-50-P-A
60	DSNU-8-60-P-A	DSNU-10-60-P-A	DSNU-12-60-P-A
80	DSNU-8-80-P-A	DSNU-10-80-P-A	DSNU-12-80-P-A
100	DSNU-8-100-P-A	DSNU-10-100-P-A	DSNU-12-100-P-A
125	-	-	DSNU-12-125-P-A
160	-	-	DSNU-12-160-P-A
200	-	-	DSNU-12-200-P-A
250	-	-	-

DSNU Round Cylinder Sizes

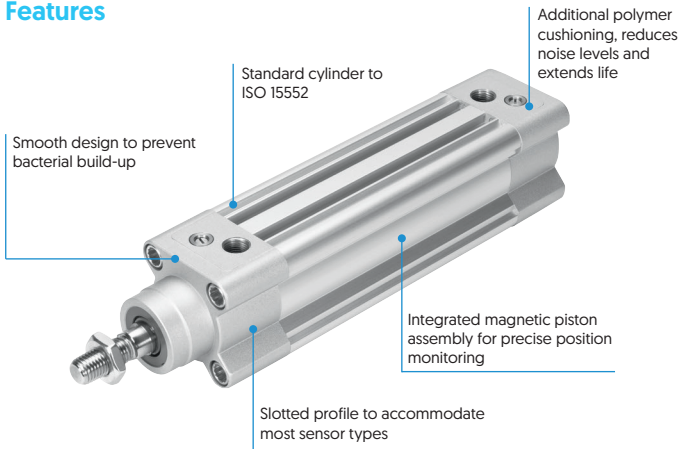


STROKE (mm)	BORE (mm)		
	16	20	25
10	DSNU-16-10-P-A	DSNU-20-10-P-A	DSNU-25-10-P-A
15	DSNU-16-15-P-A	DSNU-20-15-P-A	DSNU-25-15-P-A
20	DSNU-16-20-P-A	DSNU-20-20-P-A	DSNU-25-20-P-A
25	DSNU-16-25-P-A	DSNU-20-25-P-A	DSNU-25-25-P-A
30	DSNU-16-30-P-A	DSNU-20-30-P-A	DSNU-25-30-P-A
40	DSNU-16-40-P-A	DSNU-20-40-P-A	DSNU-25-40-P-A
50	DSNU-16-50-P-A	DSNU-20-50-P-A	DSNU-25-50-P-A
60	DSNU-16-60-PPS-A	DSNU-20-60-PPS-A	DSNU-25-60-PPS-A
80	DSNU-16-80-PPS-A	DSNU-20-80-PPS-A	DSNU-25-80-PPS-A
100	DSNU-16-100-PPS-A	DSNU-20-100-PPS-A	DSNU-25-100-PPS-A
125	DSNU-16-125-PPS-A	DSNU-20-125-PPS-A	DSNU-25-125-PPS-A
160	DSNU-16-160-PPS-A	DSNU-20-160-PPS-A	DSNU-25-160-PPS-A
200	DSNU-16-200-PPS-A	DSNU-20-200-PPS-A	DSNU-25-200-PPS-A
250	-	DSNU-20-250-PPS-A	DSNU-25-250-PPS-A

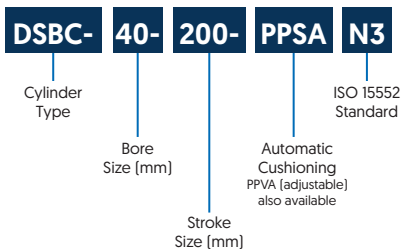


DSBC Standard Cylinder

Features



Part Numbering



DSBC Standard Cylinder



STROKE (mm)	BORE (mm)		
	32	40	50
20	DSBC-32-20-PPSA-N3	DSBC-40-20-PPSA-N3	DSBC-50-20-PPSA-N3
25	DSBC-32-25-PPSA-N3	DSBC-40-25-PPSA-N3	DSBC-50-25-PPSA-N3
30	DSBC-32-30-PPSA-N3	DSBC-40-30-PPSA-N3	DSBC-50-30-PPSA-N3
40	DSBC-32-40-PPSA-N3	DSBC-40-40-PPSA-N3	DSBC-50-40-PPSA-N3
50	DSBC-32-50-PPSA-N3	DSBC-40-50-PPSA-N3	DSBC-50-50-PPSA-N3
60	DSBC-32-60-PPSA-N3	DSBC-40-60-PPSA-N3	DSBC-50-60-PPSA-N3
70	DSBC-32-70-PPSA-N3	DSBC-40-70-PPSA-N3	DSBC-50-70-PPSA-N3
80	DSBC-32-80-PPSA-N3	DSBC-40-80-PPSA-N3	DSBC-50-80-PPSA-N3
100	DSBC-32-100-PPSA-N3	DSBC-40-100-PPSA-N3	DSBC-50-100-PPSA-N3
125	DSBC-32-125-PPSA-N3	DSBC-40-125-PPSA-N3	DSBC-50-125-PPSA-N3
160	DSBC-32-160-PPSA-N3	DSBC-40-160-PPSA-N3	DSBC-50-160-PPSA-N3
200	DSBC-32-200-PPSA-N3	DSBC-40-200-PPSA-N3	DSBC-50-200-PPSA-N3
250	DSBC-32-250-PPSA-N3	DSBC-40-250-PPSA-N3	DSBC-50-250-PPSA-N3
320	DSBC-32-320-PPSA-N3	DSBC-40-320-PPSA-N3	DSBC-50-320-PPSA-N3
400	DSBC-32-400-PPSA-N3	DSBC-40-400-PPSA-N3	DSBC-50-400-PPSA-N3
500	DSBC-32-500-PPSA-N3	DSBC-40-500-PPSA-N3	DSBC-50-500-PPSA-N3

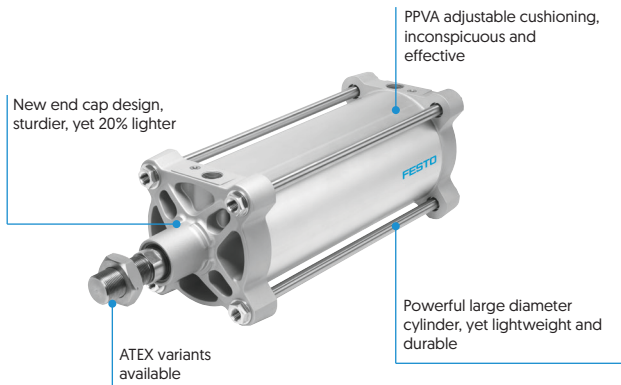
DSBC Standard Cylinder



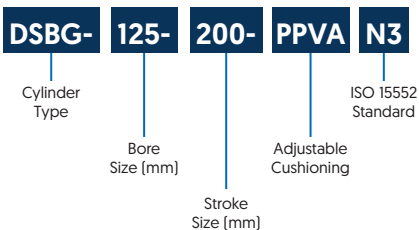
STROKE (mm)	BORE (mm)	
	63	80
20	DSBC-63-20-PPSA-N3	DSBC-80-20-PPSA-N3
25	DSBC-63-25-PPSA-N3	DSBC-80-25-PPSA-N3
30	DSBC-63-30-PPSA-N3	DSBC-80-30-PPSA-N3
40	DSBC-63-40-PPSA-N3	DSBC-80-40-PPSA-N3
50	DSBC-63-50-PPSA-N3	DSBC-80-50-PPSA-N3
60	DSBC-63-60-PPSA-N3	DSBC-80-60-PPSA-N3
70	DSBC-63-70-PPSA-N3	DSBC-80-70-PPSA-N3
80	DSBC-63-80-PPSA-N3	DSBC-80-80-PPSA-N3
100	DSBC-63-100-PPSA-N3	DSBC-80-100-PPSA-N3
125	DSBC-63-125-PPSA-N3	DSBC-80-125-PPSA-N3
160	DSBC-63-160-PPSA-N3	DSBC-80-160-PPSA-N3
200	DSBC-63-200-PPSA-N3	DSBC-80-200-PPSA-N3
250	DSBC-63-250-PPSA-N3	DSBC-80-250-PPSA-N3
320	DSBC-63-320-PPSA-N3	DSBC-80-320-PPSA-N3
400	DSBC-63-400-PPSA-N3	DSBC-80-400-PPSA-N3
500	DSBC-63-500-PPSA-N3	DSBC-80-500-PPSA-N3

DSBG Standard Cylinder Tie Rod Construction

Features



Part Numbering



DSBG Standard Cylinder Tie Rod Construction

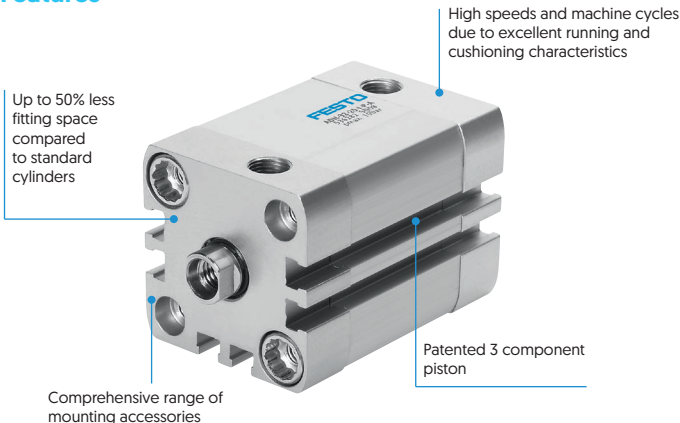
STROKE (mm)	BORE (mm)	
	100	125
25	DSBG-100-25-PPVA-N3	DSBG-125-25-PPVA-N3
40	DSBG-100-40-PPVA-N3	DSBG-125-40-PPVA-N3
50	DSBG-100-50-PPVA-N3	DSBG-125-50-PPVA-N3
80	DSBG-100-80-PPVA-N3	DSBG-125-80-PPVA-N3
100	DSBG-100-100-PPVA-N3	DSBG-125-100-PPVA-N3
125	DSBG-100-125-PPVA-N3	DSBG-125-125-PPVA-N3
160	DSBG-100-160-PPVA-N3	DSBG-125-160-PPVA-N3
200	DSBG-100-200-PPVA-N3	DSBG-125-200-PPVA-N3
250	DSBG-100-250-PPVA-N3	DSBG-125-250-PPVA-N3
320	DSBG-100-320-PPVA-N3	DSBG-125-320-PPVA-N3
400	DSBG-100-400-PPVA-N3	DSBG-125-400-PPVA-N3
500	DSBG-100-500-PPVA-N3	DSBG-125-500-PPVA-N3

STROKE (mm)	BORE (mm)	
	160	200
25	DSBG-160-25-PPVA-N3	DSBG-200-25-PPVA-N3
40	DSBG-160-40-PPVA-N3	DSBG-200-40-PPVA-N3
50	DSBG-160-50-PPVA-N3	DSBG-200-50-PPVA-N3
80	DSBG-160-80-PPVA-N3	DSBG-200-80-PPVA-N3
100	DSBG-160-100-PPVA-N3	DSBG-200-100-PPVA-N3
125	DSBG-160-125-PPVA-N3	DSBG-200-125-PPVA-N3
160	DSBG-160-160-PPVA-N3	DSBG-200-160-PPVA-N3
200	DSBG-160-200-PPVA-N3	DSBG-200-200-PPVA-N3
250	DSBG-160-250-PPVA-N3	DSBG-200-250-PPVA-N3
320	DSBG-160-320-PPVA-N3	DSBG-200-320-PPVA-N3
400	DSBG-160-400-PPVA-N3	DSBG-200-400-PPVA-N3
500	DSBG-160-500-PPVA-N3	DSBG-200-500-PPVA-N3

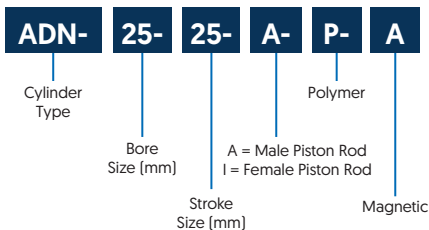


ADN Compact Cylinder (Male and Female Piston Rod)

Features



Part Numbering



ADN Compact Cylinder (Male Piston Rod)



STROKE (mm)	BORE (mm)		
	12	16	20
5	ADN-12-5-A-P-A	ADN-16-5-A-P-A	ADN-20-5-A-P-A
10	ADN-12-10-A-P-A	ADN-16-10-A-P-A	ADN-20-10-A-P-A
15	ADN-12-15-A-P-A	ADN-16-15-A-P-A	ADN-20-15-A-P-A
20	ADN-12-20-A-P-A	ADN-16-20-A-P-A	ADN-20-20-A-P-A
25	ADN-12-25-A-P-A	ADN-16-25-A-P-A	ADN-20-25-A-P-A
30	ADN-12-30-A-P-A	ADN-16-30-A-P-A	ADN-20-30-A-P-A
40	ADN-12-40-A-P-A	ADN-16-40-A-P-A	ADN-20-40-A-P-A
50	-	ADN-16-50-A-P-A	ADN-20-50-A-P-A
60	-	-	ADN-20-60-A-P-A
80	-	-	-

STROKE (mm)	BORE (mm)		
	25	32	40
5	ADN-25-5-A-P-A	ADN-32-5-A-P-A	ADN-40-5-A-P-A
10	ADN-25-10-A-P-A	ADN-32-10-A-P-A	ADN-40-10-A-P-A
15	ADN-25-15-A-P-A	ADN-32-15-A-P-A	ADN-40-15-A-P-A
20	ADN-25-20-A-P-A	ADN-32-20-A-P-A	ADN-40-20-A-P-A
25	ADN-25-25-A-P-A	ADN-32-25-A-P-A	ADN-40-25-A-P-A
30	ADN-25-30-A-P-A	ADN-32-30-A-P-A	ADN-40-30-A-P-A
40	ADN-25-40-A-P-A	ADN-32-40-A-P-A	ADN-40-40-A-P-A
50	ADN-25-50-A-P-A	ADN-32-50-A-P-A	ADN-40-50-A-P-A
60	ADN-25-60-A-P-A	ADN-32-60-A-P-A	ADN-40-60-A-P-A
80	ADN-25-80-A-P-A	ADN-32-80-A-P-A	ADN-40-80-A-P-A

ADN Compact Cylinder (Male Piston Rod)



STROKE (mm)	BORE (mm)		
	50	63	80
5	ADN-50-5-A-P-A	-	-
10	ADN-50-10-A-P-A	ADN-63-10-A-P-A	ADN-80-10-A-P-A
15	ADN-50-15-A-P-A	ADN-63-15-A-P-A	ADN-80-15-A-P-A
20	ADN-50-20-A-P-A	ADN-63-20-A-P-A	ADN-80-20-A-P-A
25	ADN-50-25-A-P-A	ADN-63-25-A-P-A	ADN-80-25-A-P-A
30	ADN-50-30-A-P-A	ADN-63-30-A-P-A	ADN-80-30-A-P-A
40	ADN-50-40-A-P-A	ADN-63-40-A-P-A	ADN-80-40-A-P-A
50	ADN-50-50-A-P-A	ADN-63-50-A-P-A	ADN-80-50-A-P-A
60	ADN-50-60-A-P-A	ADN-63-60-A-P-A	ADN-80-60-A-P-A
80	ADN-50-80-A-P-A	ADN-63-80-A-P-A	ADN-80-80-A-P-A

ADN Compact Cylinder (Female Piston Rod)

STROKE (mm)	BORE (mm)		
	12	16	20
5	ADN-12-5-I-P-A	ADN-16-5-I-P-A	ADN-20-5-I-P-A
10	ADN-12-10-I-P-A	ADN-16-10-A-P-A	ADN-20-10-I-P-A
15	ADN-12-15-I-P-A	ADN-16-15-A-P-A	ADN-20-15-I-P-A
20	ADN-12-20-I-P-A	ADN-16-20-A-P-A	ADN-20-20-I-P-A
25	ADN-12-25-I-P-A	ADN-16-25-A-P-A	ADN-20-25-I-P-A
30	ADN-12-30-I-P-A	ADN-16-30-A-P-A	ADN-20-30-I-P-A
40	ADN-12-40-I-P-A	ADN-16-40-A-P-A	ADN-20-40-I-P-A
50	-	ADN-16-50-A-P-A	ADN-20-50-I-P-A
60	-	-	ADN-20-60-I-P-A
80	-	-	-

Compact Cylinder ADN (Female Piston Rod)



STROKE (mm)	BORE (mm)		
	25	32	40
5	ADN-25-5-I-P-A	ADN-32-5-I-P-A	ADN-40-5-I-P-A
10	ADN-25-10-I-P-A	ADN-32-10-I-P-A	ADN-40-10-I-P-A
15	ADN-25-15-I-P-A	ADN-32-15-I-P-A	ADN-40-15-I-P-A
20	ADN-25-20-I-P-A	ADN-32-20-I-P-A	ADN-40-20-I-P-A
25	ADN-25-25-I-P-A	ADN-32-25-I-P-A	ADN-40-25-I-P-A
30	ADN-25-30-I-P-A	ADN-32-30-I-P-A	ADN-40-30-I-P-A
40	ADN-25-40-I-P-A	ADN-32-40-I-P-A	ADN-40-40-I-P-A
50	ADN-25-50-I-P-A	ADN-32-50-I-P-A	ADN-40-50-I-P-A
60	ADN-25-60-I-P-A	ADN-32-60-I-P-A	ADN-40-60-I-P-A
80	ADN-25-80-I-P-A	ADN-32-80-I-P-A	ADN-40-80-I-P-A

STROKE (mm)	BORE (mm)		
	50	63	80
5	ADN-50-5-I-P-A	-	-
10	ADN-50-10-I-P-A	ADN-63-10-I-P-A	ADN-80-10-I-P-A
15	ADN-50-15-I-P-A	ADN-63-15-I-P-A	ADN-80-15-I-P-A
20	ADN-50-20-I-P-A	ADN-63-20-I-P-A	ADN-80-20-I-P-A
25	ADN-50-25-I-P-A	ADN-63-25-I-P-A	ADN-80-25-I-P-A
30	ADN-50-30-I-P-A	ADN-63-30-I-P-A	ADN-80-30-I-P-A
40	ADN-50-40-I-P-A	ADN-63-40-I-P-A	ADN-80-40-I-P-A
50	ADN-50-50-I-P-A	ADN-63-50-I-P-A	ADN-80-50-I-P-A
60	ADN-50-60-I-P-A	ADN-63-50-I-P-A	ADN-80-60-I-P-A

FESTO

**DFM:
Flexible and
reliable**



**You need flexible and dynamic handling systems.
You need modular and reliable products.
We are your handling experts.**

**→ WE ARE THE ENGINEERS
OF PRODUCTIVITY.**

Its guide makes it resilient, its size makes it usable anywhere, its profile is versatile, its design is impressive. It is also extremely durable. Created with one goal in mind: simple guidance. That's why the guided drive DFM is part of our core product range.

Cylinder Accessories



Foot Mountings

BORE SIZE	PART NUMBER
12/16	HBN-12/16X1
12/16	HBN-12/16X2
20/25	HBN-20/25X1
20/25	HBN-20/25X2



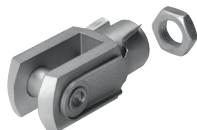
Clevis Foot

BORE SIZE	PART NUMBER
12/16	LBN-12/16
20/25	LBN-20/25



Rod Clevis

BORE SIZE	PART NUMBER
12/16	SG-M6
20	SG-M8
25/32	SG-M10X1.25
40	SG-M12X1.25
50/63	SG-M16X1.5
80	SG-M20X1.5



Rod Eye

BORE SIZE	PART NUMBER
12/16	SGS-M6
20	SGS-M8
25/32	SGS-M10X1.25
40	SGS-M12X1.25
50/63	SGS-M16X1.5
80	SGS-M20X1.5



Cylinder Accessories



Self-aligning Rod Coupler

BORE SIZE	PART NUMBER
12/16	FK-M6
20	FK-M8
25/32	FK-M10X1.25
40	FK-M12X1.25
50/63	FK-M16X1.5
80	FK-M20X1.5



Clevis Foot

BORE SIZE	PART NUMBER
32	LNG-32
40	LNG-40
50	LNG-50
63	LNG-63
80	LNG-80



Foot Mounting

BORE SIZE	PART NUMBER
32	HNC-32
40	HNC-40
50	HNC-50
63	HNC-63
80	HNC-80



Cylinder Accessories



Swivel Flange SNC

BORE SIZE	PART NUMBER
32	SNC-32
40	SNC-40
50	SNC-50
63	SNC-63
80	SNC-80



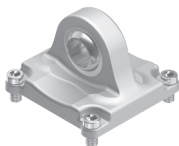
Swivel Flange SNCB

BORE SIZE	PART NUMBER
32	SNCB-32
40	SNCB-40
50	SNCB-50
63	SNCB-63
80	SNCB-80



Swivel Flange SNCS

BORE SIZE	PART NUMBER
32	SNCS-32
40	SNCS-40
50	SNCS-50
63	SNCS-63
80	SNCS-80



Cylinder Accessories



Swivel Flange SNCL

BORE SIZE	PART NUMBER
32	SNCL-32
40	SNCL-40
50	SNCL-50
63	SNCL-63
80	SNCL-80



Trunion Mounting Kit

BORE SIZE	PART NUMBER
32	DAMT-V1-32-A
40	DAMT-V1-40-A
50	DAMT-V1-50-A
63	DAMT-V1-63-A
80	DAMT-V1-80-A



Switch Mounting Band

BORE SIZE	PART NUMBER
12	SMBR-8-12
16	SMBR-8-16
20	SMBR-8-20
25	SMBR-8-25



Cylinder Switches



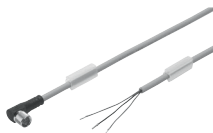
Cylinder Switches

PART NUMBER	DESCRIPTION
543861-FESTO	SME-8M-DS-24V-K-0,3-M8D
574334-FESTO	SMT-8M-A-PS-24V-E-0,3-M8D



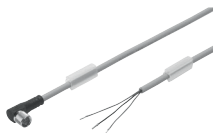
Extension Cables M8

PART NUMBER	CABLE LENGTH
NEBU-M8G3-K-2.5-LE3	2.5
NEBU-M8G3-K-5-LE3	5.0
NEBU-M8G3-K-10-LE3	10.0
NEBU-M8W3-K-2.5-LE3	2.5
NEBU-M8W3-K-5-LE3	5.0
NEBU-M8W3-K-10-LE3	10.0



Extension Cables M12

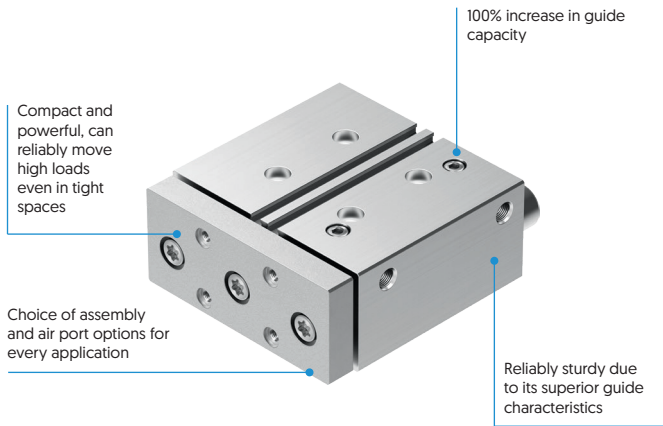
PART NUMBER	CABLE LENGTH
NEBU-M12G5-K-2.5-LE5	2.5
NEBU-M12G5-K-5-LE5	5.0
NEBU-M12G5-K-10-LE5	10.0
NEBU-M12W5-K-2.5-LE5	2.5
NEBU-M12W5-K-5-LE5	5.0



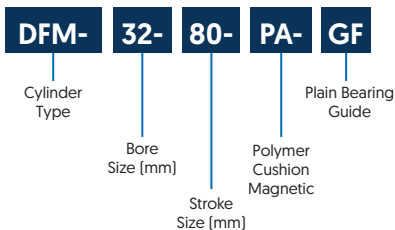


DFM Guided Drives

Features



Part Numbering



DFM Guided Drives



STROKE (mm)	BORE (mm)		
	12	16	20
20	DFM-12-20-PA-GF	DFM-16-20-PA-GF	DFM-20-20-PA-GF
25	DFM-12-25-PA-GF	DFM-16-25-PA-GF	DFM-20-25-PA-GF
30	DFM-12-30-PA-GF	DFM-16-30-PA-GF	DFM-20-30-PA-GF
40	DFM-12-40-PA-GF	DFM-16-40-PA-GF	DFM-20-40-PA-GF
50	DFM-12-50-PA-GF	DFM-16-50-PA-GF	DFM-20-50-PA-GF
80	DFM-12-80-PA-GF	DFM16-80-PA-GF	DFM-20-80-PA-GF
100	DFM-12-100-PA-GF	DFM16-100-PA-GF	DFM-20-100-PA-GF
125	-	-	-
160	-	-	-
200	-	-	-

STROKE (mm)	BORE (mm)		
	25	32	40
20	DFM-25-20-PA-GF	DFM-32-20-PA-GF	-
25	DFM-25-25-PA-GF	DFM-32-25-PA-GF	DFM-40-25-PA-GF
30	DFM-25-30-PA-GF	DFM-32-30-PA-GF	-
40	DFM-25-40-PA-GF	DFM-32-40-PA-GF	-
50	DFM-25-50-PA-GF	DFM-32-50-PA-GF	DFM-40-50-PA-GF
80	DFM-25-80-PA-GF	DFM-32-80-PA-GF	DFM-40-80-PA-GF
100	DFM-25-100-PA-GF	DFM-32-100-PA-GF	DFM-40-100-PA-GF
125	-	DFM-32-125-PA-GF	DFM-40-125-PA-GF
160	-	DFM-32-160-P-A-GF	DFM-40-160-PA-GF
200	-	DFM-32-200-PA-GF	-

DFM Guided Drives

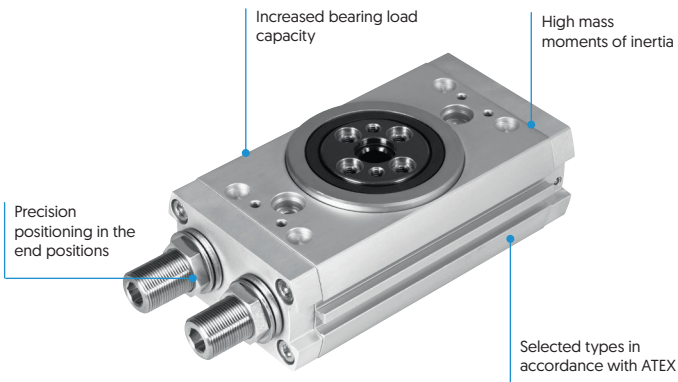


STROKE (mm)	BORE (mm)	
	50	63
20	-	-
25	DFM-50-25-PA-GF	DFM-63-25-PA-GF
30	-	-
40	-	-
50	DFM-50-50-PA-GF	DFM-63-50-PA-GF
80	DFM-50-80-P-A-GF	DFM-63-80-PA-GF
100	DFM-50-100-PA-GF	DFM-63-100-PA-GF
125	DFM-50-125-PA-GF	DFM-63-125-P-A-GF
160	DFM-50-160-PA-GF	DFM-63-160-PA-GF
200	DFM-50-200-PA-GF	DFM-63-200-P-A-GF



DRRD Semi-Rotary Drive

Features



Part Numbering

DRRD-

Cylinder
Type

12-

Bore
(mm)

180-

Rotation
Angle

FH-

Flanged
Shaft

PA

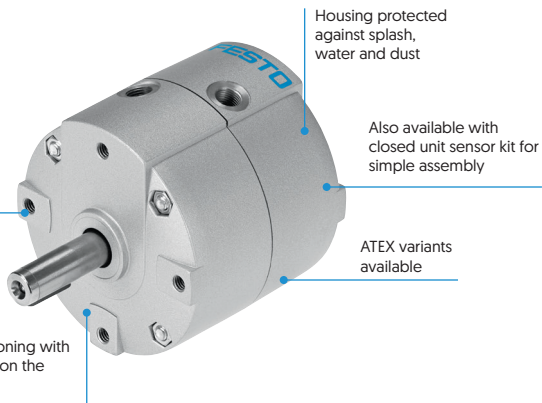
PA = Polymer Cushion
Magnetic
Y9A = Shock
Absorber

PART NUMBER	PART NUMBER	PART NUMBER
DRRD-12-180-FH-PA	DRRD-20-180-FH-Y9A	DRRD-35-180-FH-PA
DRRD-12-180-FH-Y9A	DRRD-25-180-FH-PA	DRRD-35-180-FH-Y9A
DRRD-16-180-FH-PA	DRRD-25-180-FH-Y9A	DRRD-40-180-FH-PA
DRRD-16-180-FH-Y9A	DRRD-32-180-FH-PA	DRRD-40-180-FH-Y9A
DRRD-20-180-FH-PA	DRRD-32-180-FH-Y9A	DRRD-63-180-FH-Y9A

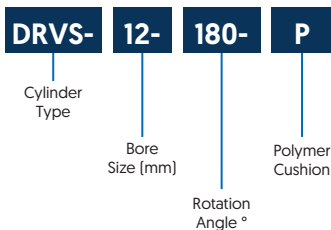


DRVS Semi-Rotary Vane Drive

Features



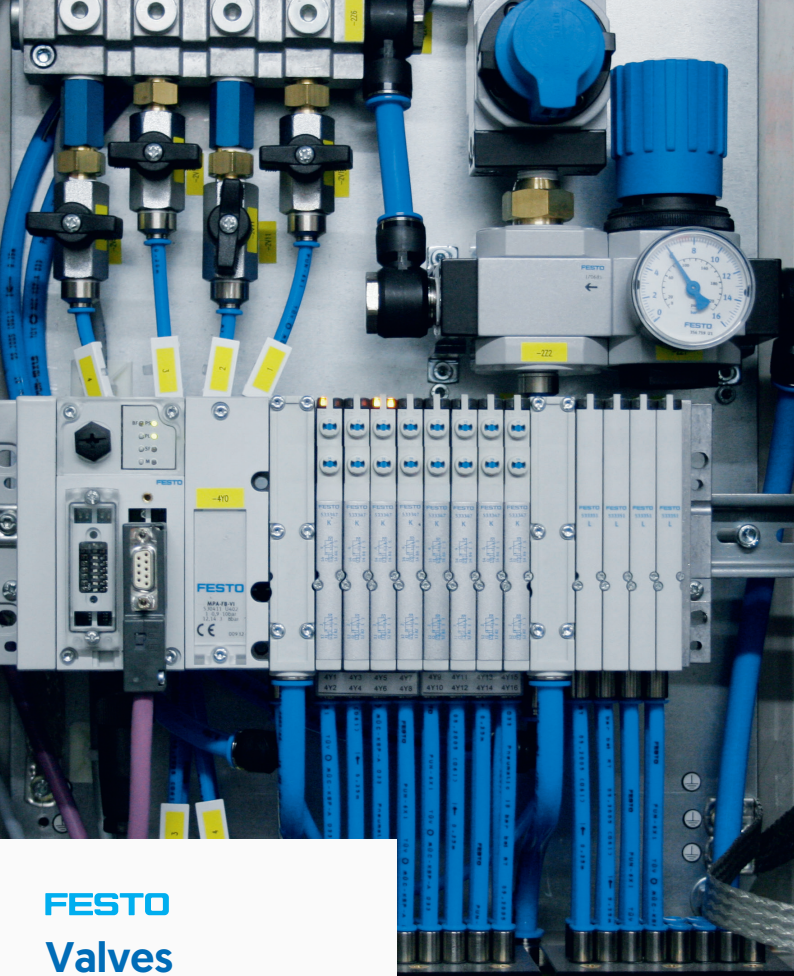
Part Numbering



DRVS Semi-Rotary Vane Drive



BORE (mm)	ROTATION ANGLE (°)	PART NUMBER
6	90	DRVS-6-90-P
6	180	DRVS-6-180-P
8	90	DRVS-8-90-P
8	180	DRVS-8-180-P
12	90	DRVS-12-90-P
12	180	DRVS-12-180-P
12	270	DRVS-12-270-P
16	90	DRVS-16-90-P
16	180	DRVS-16-180-P
16	270	DRVS-16-270-P
25	90	DRVS-25-90-P
25	180	DRVS-25-180-P
25	270	DRVS-25-270-P
32	90	DRVS-32-90-P
32	180	DRVS-32-180-P
32	270	DRVS-32-270-P
40	90	DRVS-40-90-P
40	180	DRVS-40-180-P
40	270	DRVS-40-270-P



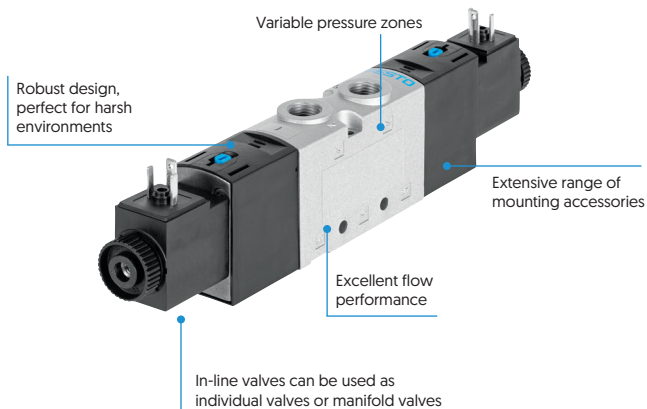
FESTO Valves

The following pages contain just a selection of the full range, for more information contact your local ERIKS Service Centre.

ERIKS

VUVS Universal Directional Control Valves

Features

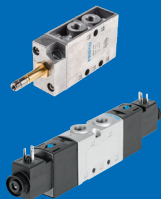


Obsolescence, are you prepared?

Future-proof your production, save £'s

CLASSIC
MFH-5-1/4-B
£182.91

REPLACEMENT
VUVS-L25-M52-MD-G14-F8-1B2
£84.31
SAVING
£98.60



Did you know...?

at least
45% of factories
have **NEVER** undertaken an
obsolescence audit

Don't become a
statistic, call us today!

Are you getting the latest innovation to save you money...?

VUVS Universal Directional Control Valves

PART NUMBER	DESCRIPTION	FESTO PARAMETRIC PART NO
575274-FESTO	Valve 3/2NC Single Solenoid 1/8 24vdc	VUVS-L20-M32C-MD-G18-F7-IC1
575264-FESTO	Valve 5/2 Single Solenoid 1/8 24vdc	VUVS-L20-M52-MD-G18-F7-IC1
575265-FESTO	Valve 5/2 Double Solenoid 1/8 24vdc	VUVS-L20-B52-D-G18-F7-IC1
575268-FESTO	Valve 5/3 Centre Closed 1/8 24vdc	VUVS-L20-P53C-MD-G18-F7-IC1
575266-FESTO	Valve 5/3 Centre Exhaust 1/8 24vdc	VUVS-L20-P53E-MD-G18-F7-IC1
575481-FESTO	Valve 3/2NC Single Solenoid 1/4 24vdc	VUVS-L25-M32C-MD-G14-F8-1B2
575513-FESTO	Valve 5/2 Single Solenoid 1/4 24vdc	VUVS-L25-M52-MD-G14-F8-1B2
575520-FESTO	Valve 5/2 Double Solenoid 1/4 24vdc	VUVS-L25-B52-D-G14-F8-1B2
575527-FESTO	Valve 5/3 Centre Closed 1/4 24vdc	VUVS-L25-P53C-MD-G14-F8-1B2
575541-FESTO	Valve 5/3 Centre Exhaust 1/4 24vdc	VUVS-L25-P53E-MD-G14-F8-1B2
575574-FESTO	Valve 3/2NC Single Solenoid 3/8 24vdc	VUVS-L30-M32C-MD-G38-F8-1B2
575606-FESTO	Valve 5/2 Single Solenoid 3/8 24vdc	VUVS-L30-M52-MD-G38-F8-1B2
575613-FESTO	Valve 5/2 Double Solenoid 3/8 24vdc	VUVS-L30-B52-D-G38-F8-1B2
575620-FESTO	Valve 5/3 Centre Closed 3/8 24vdc	VUVS-L30-P53C-MD-G38-F8-1B2

Blanking Plate

For valve position on manifold block for 3/2 way valves

PART NUMBER	DESCRIPTION	SIZE
VABB-B10-20-E-P3	Cover Plate VABB-B10-20-E-P3 576411	20
VABB-B10-25-E-P3	Cover Plate VABB-B10-25-E-P3 8026210	25
VABB-B10-30-E-P3	Cover Plate VABB-B10-30-E-P3 8026336	30

Blanking Plate

For valve position on manifold block for 5/2 way or 5/3 way valves

PART NUMBER	DESCRIPTION	SIZE
VABB-B10-20-E	Cover Plate VABB-B10-20-E 576410	20
VABB-B10-25-E	Cover Plate VABB-B10-25-E 8026209	25
VABB-B10-30-E	Cover Plate VABB-B10-30-E 8026335	30

Blanking Plate

For valve position on supply manifold

PART NUMBER	DESCRIPTION	SIZE
VABB-B10-20-A	Cover Plate VABB-B10-20-A 576409	20
VABB-B10-25-A	Cover Plate VABB-B10-25-A 8026208	25
VABB-B10-30-A	Cover Plate VABB-B10-30-A 8026334	30

Manifold - Size 20

For 3/2 way valves, inc seals and screws for mounting valves

PART NUMBER	DESCRIPTION	NO OF POSITIONS
VABM-B10-20S-G14-2-P3	Manifold VABM-B10-20S-G14-2-P3 576465	2
VABM-B10-20S-G14-4-P3	Manifold VABM-B10-20S-G14-4-P3 576467	4
VABM-B10-20S-G14-6-P3	Manifold VABM-B10-20S-G14-6-P3 576469	6
VABM-B10-20S-G14-8-P3	Manifold VABM-B10-20S-G14-8-P3 576471	8
VABM-B10-20S-G14-10-P3	Manifold VABM-B10-20S-G14-10-P3 576473	10

Manifold - Size 25

For 3/2 way valves, inc seals and screws for mounting valves

PART NUMBER	DESCRIPTION	NO OF POSITIONS
VABM-B10-25S-G38-2-P3	Manifold VABM-B10-25S-G38-2-P3 8026297	2
VABM-B10-25S-G38-4-P3	Manifold VABM-B10-25S-G38-4-P3 8026299	4
VABM-B10-25S-G38-6-P3	Manifold VABM-B10-25S-G38-6-P3 8026301	6
VABM-B10-25S-G38-8-P3	Manifold VABM-B10-25S-G38-8-P3 8026303	8
VABM-B10-20S-G14-10-P3	Manifold VABM-B10-20S-G14-10-P3 576473	10

Manifold - Size 20

For 5/2 way and 5/3 way valves, inc seals and screws for valve assembly

PART NUMBER	DESCRIPTION	NO OF POSITIONS
VABM-B10-20S-G14-2	Manifold VABM-B10-20S-G14-2 576417	2
VABM-B10-20S-G14-4	Manifold VABM-B10-20S-G14-4 576419	4
VABM-B10-20S-G14-6	Manifold VABM-B10-20S-G14-6 576421	6
VABM-B10-20S-G14-8	Manifold VABM-B10-20S-G14-8 576423	8
VABM-B10-20S-G14-10	Manifold VABM-B10-20S-G14-10 576425	10

Manifold - Size 25

For 5/2 way and 5/3 way valves, inc seals and screws for valve assembly

PART NUMBER	DESCRIPTION	NO OF POSITIONS
VABM-B10-25S-G38-2	Manifold VABM-B10-25S-G38-2 8026261	2
VABM-B10-25S-G38-4	Manifold VABM-B10-25S-G38-4 8026263	4
VABM-B10-25S-G38-6	Manifold VABM-B10-25S-G38-6 8026265	6
VABM-B10-25S-G38-8	Manifold VABM-B10-25S-G38-8 8026267	8
VABM-B10-25S-G38-10	Manifold VABM-B10-25S-G38-10 8026269	10

Manifold - Size 20

Common supply manifold for mounting both sides inc seals and screws

PART NUMBER	DESCRIPTION	NO OF POSITIONS
VABM-B10-20-G38-2-P53	Supply Manifold VABM-B10-20-G38-2-P53	2
VABM-B10-20-G38-4-P53	Supply Manifold VABM-B10-20-G38-4-P53	4
VABM-B10-20-G38-6-P53	Supply Manifold VABM-B10-20-G38-6-P53	6
VABM-B10-20-G38-8-P53	Supply Manifold VABM-B10-20-G38-8-P53	8
VABM-B10-20-G38-10-P53	Supply Manifold VABM-B10-20-G38-10-P53	10

Manifold - Size 25

Common supply manifold for mounting both sides inc seals and screws

PART NUMBER	DESCRIPTION	NO OF POSITIONS
VABM-B10-25-G12-2-P53	Supply Manifold VABM-B10-25-G12-2-P53	2
VABM-B10-25-G12-4-P53	Supply Manifold VABM-B10-25-G12-4-P53	4
VABM-B10-25-G12-6-P53	Supply Manifold VABM-B10-25-G12-6-P53	6
VABM-B10-25-G12-8-P53	Supply Manifold VABM-B10-25-G12-8-P53	8
VABM-B10-25-G12-10-P53	Supply Manifold VABM-B10-25-G12-10-P53	10

Coils

COIL VOLTAGE	SIZE 20	SIZE 25/30
12VDC	VACS-C-C1-5	VACF-B-B2-5
24VDC	VACS-C-C1-1	VACF-B-B2-1
48VDC	VACS-C-C1-7	VACF-B-B2-7
24VAC 50/60Hz	VACS-C-C1-1A	VACF-B-B2-1A
48VAC 50/60Hz	VACS-C-C1-7A	VACF-B-B2-7A

Plug

PLUG FOR SIZE 20 PART NUMBER	PLUG FOR SIZE 25/30 PART NUMBER
MSSD-EB	MSSD-F



FESTO

Air Preparation

The following pages contain just a selection of the full range, for more information contact your local ERIKS Service Centre.

ERIKS

Air Preparation Equipment

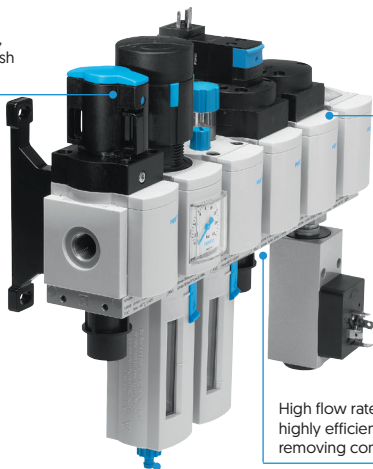
Features

Robust design, perfect for harsh environments

Good regulation characteristics with minimal pressure hysteresis

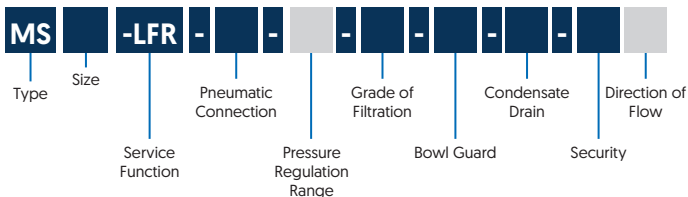
High flow rate and highly efficient in removing contaminants

Available in both manual and auto-drain options



Part Numbering

■ Mandatory Entry ■ Optional Entry



Combination Units 1/4" & 1/2" Ranges

PART NUMBER	DESCRIPTION	FLOW	PRESSURE (BAR)	
		L/MIN	MIN	MAX
MSB4-1/4:C3:J1-WP	Combination Unit Manual Shut-Off Valve and Filter Regulator 1/4in	1700	0.5	12
MSB6-1/2:C3:J1-WP	Combination Unit Manual Shut-Off Valve and Filter Regulator 1/2in	5100	0.5	12
MSB4-1/4:C3:J1:D14-WP	Combination Unit Manual Shut-Off Valve and Filter Regulator and Electrical Shut off valve 24vdc 1/4in	1400	0.5	10
MSB6-1/2:C3:J1:D14-WP	Combination Unit Manual Shut-Off Valve and Filter Regulator and Electrical Shut off valve 24vdc 1/2in	4000	0.5	10
MSB4-1/4-FRC5-JIM1	Combination Unit Filter Regulator and Lubricator 1/4in	900	0.5	12
MSB6-1/2-FRC5-JIM1	Combination Unit Filter Regulator and Lubricator 1/2in	3700	0.5	12

Regulators 1/4" & 1/2" Ranges

PART NUMBER	DESCRIPTION	FLOW	PRESSURE (BAR)	
		L/MIN	MIN	MAX
MS4-LR-1/4-D5-AS	MS4 Series Regulator 4 Bar 1/4in Lockable	2100	0.3	4
MS4-LR-1/4-D6-AS	MS4 Series Regulator 7 Bar 1/4in Lockable	1800	0.3	7
MS6-LR-1/2-D5-AS	MS6 Series Regulator 4 Bar 1/2in Lockable	7500	0.3	4
MS6-LR-1/2-D6-AS	MS6 Series Regulator 7 Bar 1/2in Lockable	6500	0.3	7

Filter, Regulator 1/4" & 1/2" Ranges

PART NUMBER	DESCRIPTION	FLOW	PRESSURE (BAR)	
		L/MIN	MIN	MAX
MS4-LFR-1/4-D6-ERV-AS	MS4 Series Filter Regulator 7 Bar 1/4in Lockable	1700	0.3	7
MS6-LFR-1/2-D6-ERV-AS	MS6 Series Filter Regulator 7 Bar 1/2in Lockable	6200	0.3	7

Shut-Off Valves 1/4" & 1/2" Ranges

PART NUMBER	DESCRIPTION	FLOW L/MIN
MS4-EM1-1/4-S	MS4 Series Manual Shut-Off Valve 1/4in	2200
MS4-EE-1/4-10V24-S	MS4 Series Electrical Shut-Off Valve 1/4in 24vdc	2000
MS6-EM1-1/2-S	MS6 Series Manual Shut-Off Valve 1/2in	8700
MS6-EE-1/2-10V24-S	MS6 Series Electrical Shut-Off Valve 1/2in 24vdc	7000

Mounting Accessories

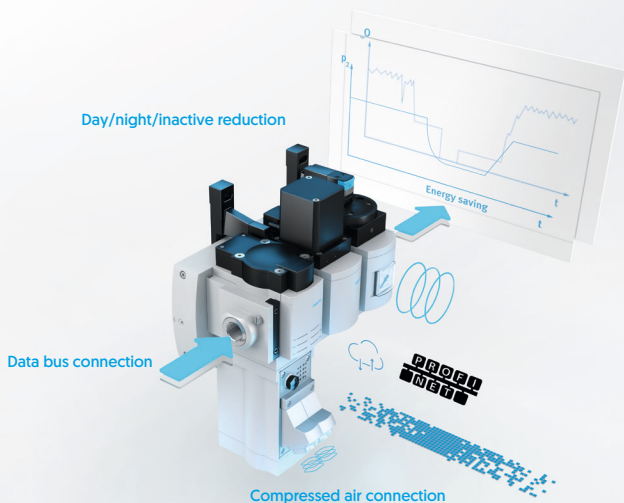
PART NUMBER	DESCRIPTION
MS6-SV-1/2-C-10V24-S	MS6 Series Soft Start Quick Exhaust Valve 24vdc
MS4-MV	MS4 Series Module Connector Standard
MS4-MVM	MS4 Series Module Connector For Mounting Regulator Cap Down
MS4-WB	MS4 Series Mounting Bracket
MS4-WP	MS4 Series Connector With Wall Bracket Standard
MS4-WPB	MS4 Series Connector With Wall Bracket Extended
MS4-WPM-D	MS4 Series Connector With Wall Bracket and Spacer
MS4-WR	MS4 Series Neck Mounting ring
MS6-MV	MS6 Series Module Connector Standard
MS6-MVM	MS6 Series Module Connector For Mounting Regulator Cap Down
MS6-WB	MS6 Series Mounting Bracket
MS6-WP	MS6 Series Connector With Wall Bracket Standard
MS6-WPB	MS6 Series Connector With Wall Bracket Extended
MS6-WPM-D	MS6 Series Connector With Wall Bracket and Spacer
MS6-WR	MS6 Series Neck Mounting ring

Reduce your CO₂ emissions

Unbeatable energy footprint thank to unique technology

While condition monitoring in compressed air systems used to be limited to gathering and analysing measurement data, consumption can now be automatically reduced by actively intervening in the compressed air supply of production plants.

Thanks to patented technology from Festo, you can **save up to 3.2 t of CO₂** and hundreds of pounds in operating costs per year. **The return on investment is generally 1-2 years.**



Intelligent use of energy

The MSE6-C2M combines pressure regulator, on/off valve, sensors and fieldbus communication in one unit.

It monitors the compressed air consumption, shuts off the compressed air after production has stopped for a certain amount of time, and prevents the system pressure from falling below a specific stand-by pressure level.

Suitable for almost any application

The modules can be used almost anywhere, whether in existing or new systems and can also be retrofitted.

- Detecting stand-by states, automatic shut-off or stand-by pressure control
- Leakage measurement
- Condition monitoring

MSE6-C2M



PART NUMBER	CONNECTIVITY	DESCRIPTION
8085455-FESTO	PROFINET	FRL Energy Efficiency Module Size 6 Series MSE 2/2 Open Alum G1/2
MSE6-E2M-5000-FB13-AGD	PROFIBUS DP	FRL Service Unit Size 6 MSE Series 2/2 Open Port M12 G1/2In
MSE6-E2M-5000-FB34-AGD	PROFINET IO with RJ45 port	FRL Service Unit Size 6 MSE Series 2/2 Open Port RJ45 G1/2In
MSE6-E2M-5000-FB36-AGD	Ethernet/IP	FRL Service Unit Size 6 MSE Series 2/2 Open Port Ethernet/IP G1/2In
MSE6-E2M-5000-FB37-AGD	EtherCAT	FRL Service Unit Size 6 MSE Series 2/2 Open Port EtherCAT G1/2In



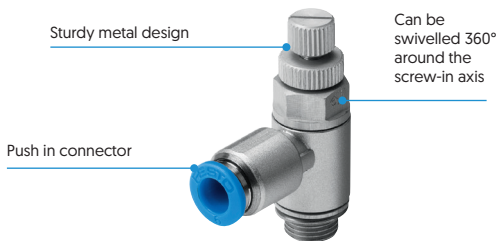
FESTO
Regulators,
Silencers &
Instrumentation

ERIKS

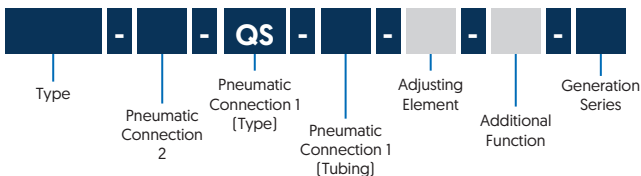
Flow Regulators



Features



Part Numbering



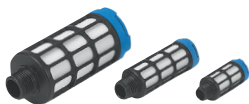
PART NUMBER	CONNECTION	TUBING SIZE
GRLA-M5-QS-4-RS-D	M5	4
GRLA-M5-QS-6-RS-D	M5	6
GRLA-1/8-QS-4-RS-D	1/8	4
GRLA-1/8-QS-6-RS-D	1/8	6
GRLA-1/8-QS-8-RS-D	1/8	8
GRLA-1/4-QS-6-RS-D	1/4	6
GRLA-1/4-QS-8-RS-D	1/4	8
GRLA-1/4-QS-10-RS-D	1/4	10
GRLA-3/8-QS-6-RS-D	3/8	6
GRLA-3/8-QS-8-RS-D	3/8	8
GRLA-3/8-QS-10-RS-D	3/8	10
GRLA-1/2-QS-12-RS-D	1/2	12

Silencers



Plastic Silencer

PART NUMBER	THREAD	DB
U-1/8	G1/8	< 77
U-1/4	G1/4	< 77
U-3/8	G3/8	< 82
U-1/2	G1/2	< 80



Die-Cast Silencer

PART NUMBER	THREAD	DB
U-1/8-B	G1/8	< 74
U-1/4-B	G1/4	< 80
U-3/8-B	G3/8	< 80
U-1/2-B	G1/2	< 80



Instrumentation - Flow Sensors

SFAB

PART NUMBER	L/MIN	ANALOGUE OUTPUT
SFAB-600U-HQ10-2SA-M12	600	4-20mA
SFAB-600U-HQ10-2SV-M12	600	0-10V
SFAB-1000U-HQ10-2SA-M12	1000	4-20mA
SFAB-1000U-HQ10-2SV-M12	1000	0-10V



SFAM 62

PART NUMBER	L/MIN	ANALOGUE OUTPUT
SFAM-62-1000L-M-2SA-M12	1000	4-20mA
SFAM-62-1000L-M-2SV-M12	1000	0-10V
SFAM-62-3000L-M-2SA-M12	3000	4-20mA
SFAM-62-3000L-M-2SV-M12	3000	0-10V
SFAM-62-5000L-M-2SA-M12	5000	4-20mA
SFAM-62-5000L-M-2SV-M12	5000	0-10V



SFAM 90

PART NUMBER	L/MIN	ANALOGUE OUTPUT
SFAM-90-5000L-M-2SA-M12	5000	4-20mA
SFAM-90-5000L-M-2SV-M12	5000	0-10V
SFAM-90-10000L-M-2SA-M12	10000	4-20mA
SFAM-90-10000L-M-2SV-M12	10000	0-10V
SFAM-90-15000L-M-2SA-M12	15000	4-20mA
SFAM-90-15000L-M-2SV-M12	15000	0-10V



Instrumentation - Pressure Sensors



- Easy operation, clear 2-line display
- Configurable, red perimeter of entire display
- Intuitive menu navigation
- Compact design 30 x 30 mm
- Other pressure ranges available, including vacuum

004 Pressure measuring range VI: -0 ... +1 bar

SWITCHING OUTPUT	ANA-LOGUE OUTPUT	SERIAL INTERFACE	PNEUMATIC CONNECTION	PART NUMBER
2 x PNP/NPN Switchable	-	-	G1/8 male, M5 female	SPAN-P10R-G18M-PN-PN-L1
			R1/8 male, M5 female	SPAN-P10R-R18M-PN-PN-L1
			M5 female	SPAN-P10R-M5F-PN-PN-L1
			Push-in connector 4mm	SPAN-P10R-Q4-PN-PN-L1

SWITCHING OUTPUT	ANA-LOGUE OUTPUT	SERIAL INTERFACE	PNEUMATIC CONNECTION	PART NUMBER
2 x PNP/NPN Switchable	0... 10V,1 ...5V 4 ... 20mA Switchable	IO-Link®	G1/8 male, M5 female	SPAN-P10R-G18M-PNLK-PNVBA-L1
			R1/8 male, M5 female	SPAN-P10R-R18M-PNLK-PNVBA-L1
			M5 female	SPAN-P10R-M5F-PNLK-PNVBA-L1
			Push-in connector 4mm	SPAN-P10R-Q4-PNLK-PNVBA-L1

PART NUMBER	DESCRIPTION
NEBS-LIG4-K-2.5-LE4	Connecting Cable 2.5 metres
NEBS-LIG4-K-5-LE4	Connecting Cable 5 metres
SAMH-PU-A	Mounting Bracket
SAMH-PN-W	Wall Mounting Bracket

eriks.co.uk
eriks.ie



For your local Service Centre UK or Ireland Call: 0121 508 6000

ERIKS UK & Ireland Head Office:
Seven Stars Way, Oldbury, West Midlands, B69 4JR

Let's make industry work better

ERIKS